



Shiny Black



Black



Charcoal



Gray



Bright White



White



Ivory



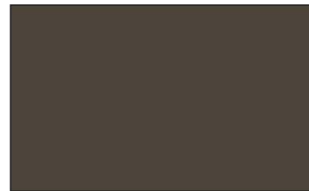
Tan



Stone



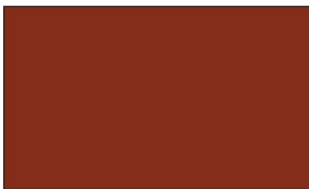
Clay



Burnished Slate



Brown



Red



Dark Red



Crimson Red



Burgundy



Gallery Blue



Blue



Evergreen



Hartford Green



Copper

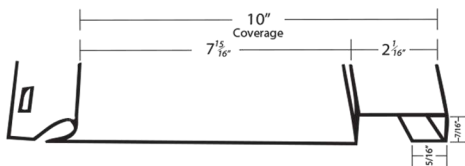


Galvalume

## CERAM-A-STAR® 1050

Ceram-A-Star® is a registered trademark of AkzoNobel.

### Board & Batten



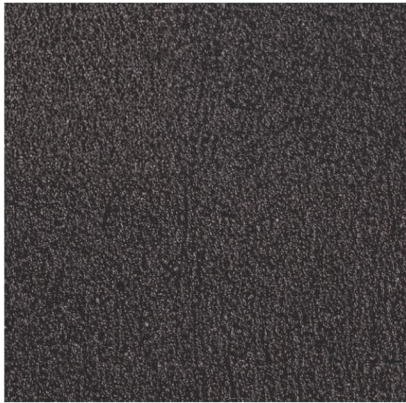
### Standing Seam Panel



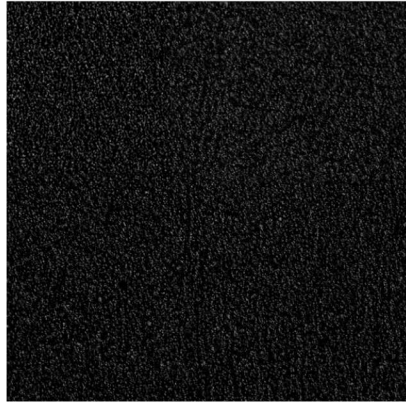


# TOPLINE METAL

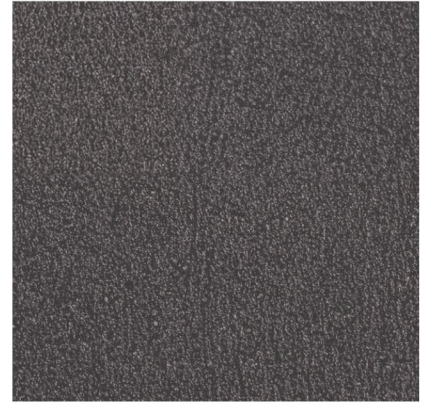
Serving Richmond, IN and beyond | Phone: 859.302.4171  
[www.toplinemetalky.com](http://www.toplinemetalky.com)



Black



\* Shiny Black



Charcoal



Burnished Slate



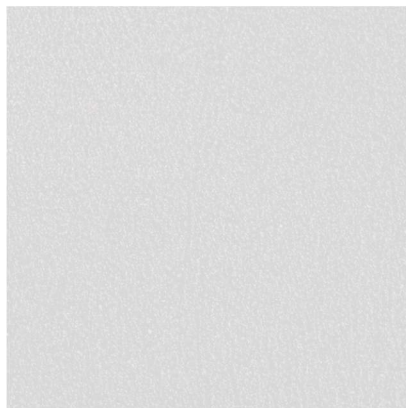
Evergreen



Dark Red



Burgundy

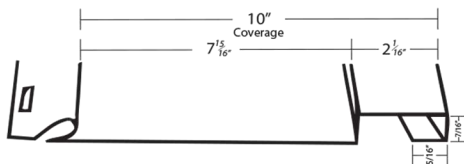


\* Bright White

## CERAM-A-STAR® 1050

Ceram-A-Star® is a registered trademark of AkzoNobel.

**Board & Batten**



**Standing Seam Panel**



The above colors are intended only as an approximation of actual colors. Exact color chips can be supplied if required. Color prices may vary. Call to check on availability of colors for 26 gauge.



# TOPLINE METAL

Serving Richmond, IN and beyond | Phone: 859.302.4171  
[www.toplinemetalky.com](http://www.toplinemetalky.com)



Cedar Aged



Cedar Gray



Cedar Natural



Hickory Natural



Stone Smoke



Stone Ash

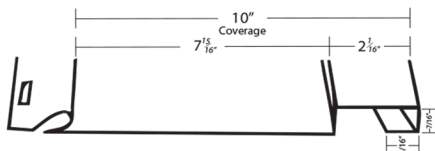


Realtree® EDGE

## CERAM-A-STAR® 1050

Ceram-A-Star® is a registered trademark of AkzoNobel.

**Board & Batten**



**Standing Seam Panel**



The above colors are intended only as an approximation of actual colors. Exact color chips can be supplied if required. Color prices may vary. Call to check on availability of colors for 26 gauge.